



Middle Street, Nazeing, EN9

BUTLER & STAG





**A stunning five bedroom detached family home, built to an exacting standard in 2012, offering an impressive 3,381 sq ft of luxurious living space. Located on a highly regarded road on the outskirts of the popular village of Nazeing, which borders Essex and Hertfordshire, this exceptional property occupies a generous plot of approximately half an acre, providing both privacy and tranquility.**



## Freehold

- Detached Family Home
- Five Bedrooms/Four Bathrooms
- Three Reception Rooms
- Well Presented
- Gated Driveway
- Garage/Utility Room

As you approach this remarkable home, an electric gated driveway greets you, offering ample parking and enhanced security. From here, steps lead up to a grand portico and a double-width entrance door, setting the tone for the elegance that lies within.

Upon entering, you are welcomed by a spacious and striking reception hallway, featuring 9'10" high ceilings and a beautiful oak staircase that leads to the first-floor accommodation. To the right of the front door, the first of the reception rooms, currently used as a large study, offers versatility and could easily be converted into an annex bedroom, as it is conveniently located next to a shower cloakroom.

The main living/dining room is a spectacular space with bifold doors that open onto an expansive patio area. A large lantern skylight, set into a semi-vaulted ceiling reaching 12'4" in height, floods the room with natural light. Double doors lead into the vast 33'5" x 20'8" kitchen/breakfast/family room, which boasts a high-end range of kitchen units and appliances. From the kitchen, there are doors opening to the rear garden, as well as access to the garage/utility room and a spacious playroom.

The first-floor accommodation offers a stunning 22'3" x 12' landing, featuring a beautiful picture window and space for a chaise longue to enjoy the scenic views. The main bedroom suite enjoys views over the back garden, oak flooring, and a luxurious en-suite with twin wash hand basins, a bath, and a separate shower cubicle. A second bedroom suite also has an attached shower room, while the remaining three bedrooms share access to a





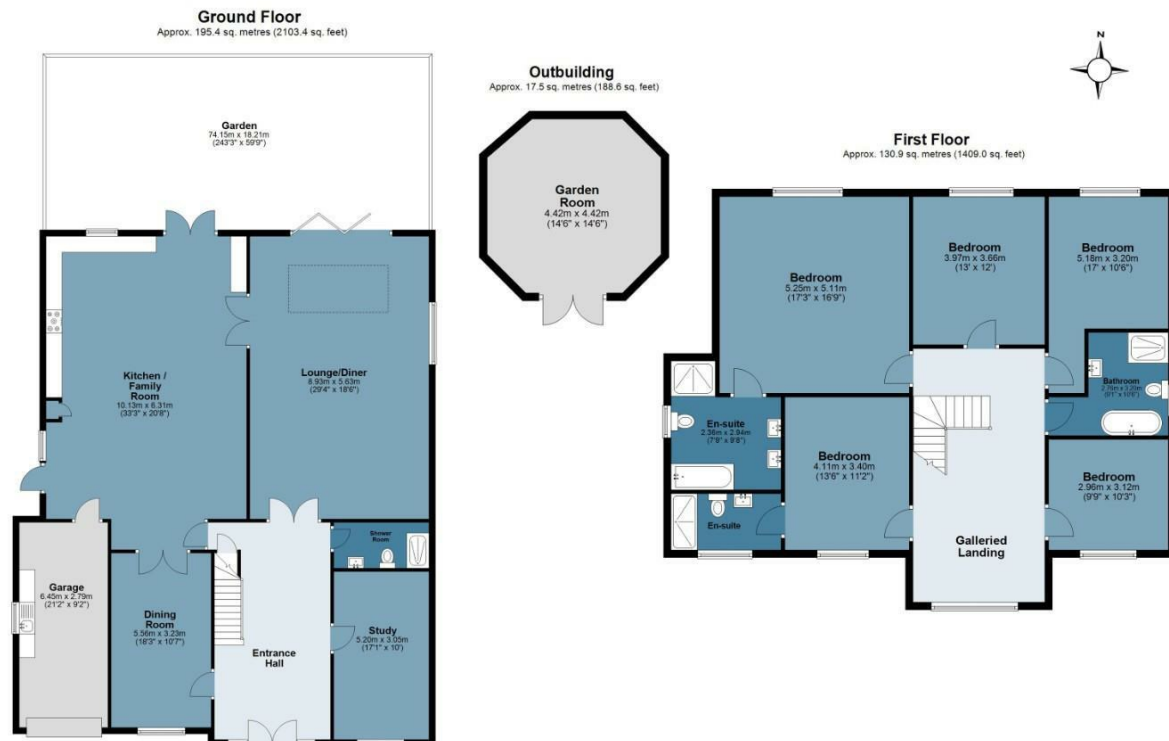




## Middle Street

Approx. Gross Internal Area 343.8 Sq M ( 3701 Sq Ft )

BUTLER & STAG



Measurements are approximate and for illustration purposes only. While we do not doubt the accuracy and completeness, we advise you conduct a careful independent assessment of the property to determine monetary value.  
© @modephoto.uk www.modephoto.co.uk

BUTLER & STAG

☎ 01992 667666

🏠 4 Forest Drive, Theydon Bois, Essex, CM16 7EY

✉ theydon@butlerandstag.com

[www.butlerandstag.uk](http://www.butlerandstag.uk)

IMPORTANT NOTICE - These particulars have been prepared in good faith and they are not intended to constitute part of an offer or contract. We have not performed a structural survey on this property and the services, appliances and specific fittings have not been tested. All photographs, measurements, floor plans and distances referred to are given as a guide and should not be relied upon.